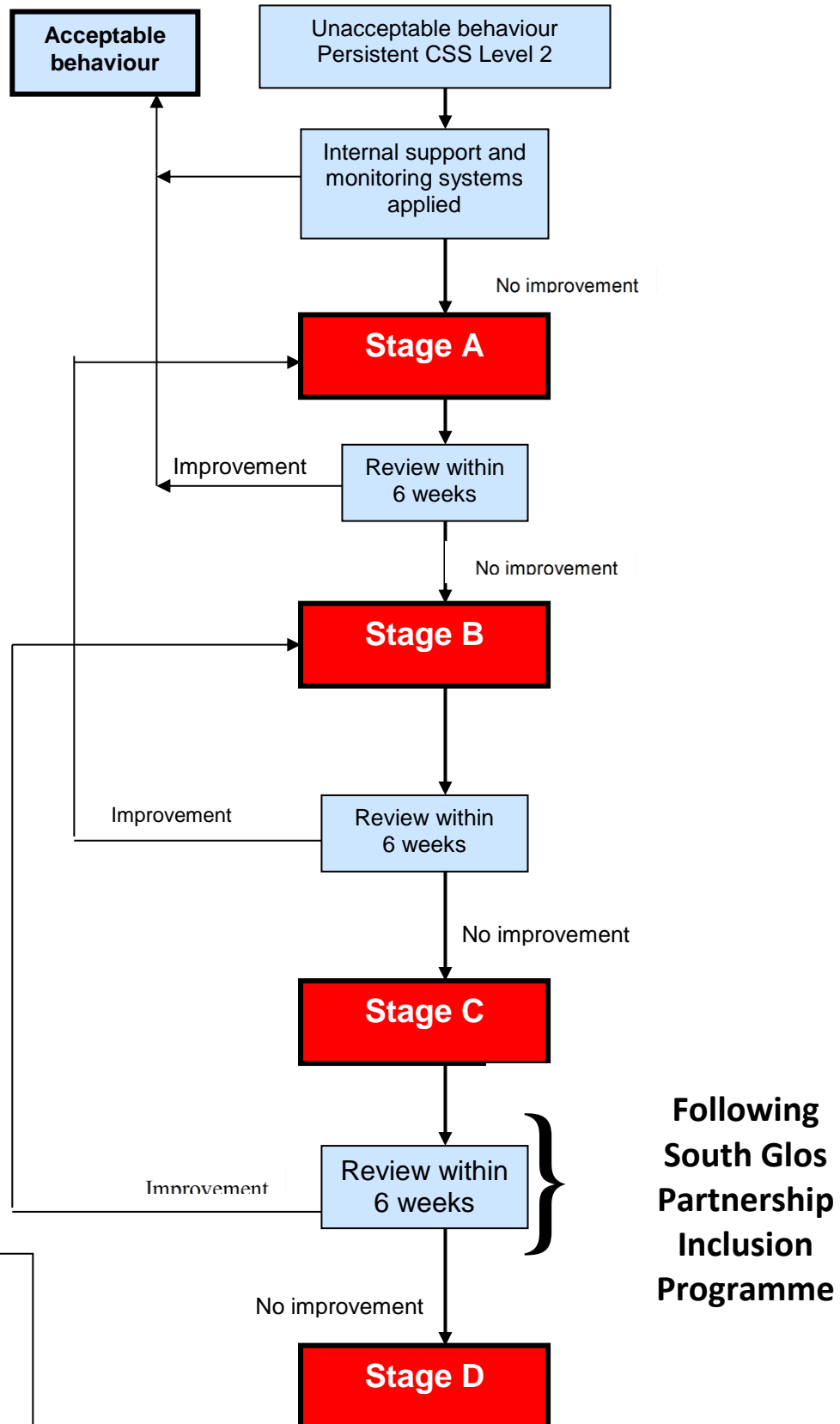


Chipping Sodbury School student support procedures

This overview document provides an outline of the stages of a progressive response to student poor behaviour. It identifies 4 stages. Progression through the stages is dependent upon the nature and extent of the poor behaviour. There is every expectation that students aim to move down stages avoiding the need for serious sanction being applied. However there are always exceptions and as indicated in the Governors' Behaviour Policy immediate progress to Stage D could happen in exceptional circumstances.



Key
 ST Senior Team
 HT Headteacher
 HoH Head of House
 GB Governing Body
 PSP Pastoral Support Plan

Chipping Sodbury School student support procedures

	EVIDENCE	SANCTION	ACTION	SUPPORT
STAGE A	<p>House Co monitors SIMS Persistent Level 2 incidents OR period of internal / external exclusion. Failure to respond to initial low level support strategies</p>	<p>Move to Stage A PSP set up Placed on Intervention tracker</p>	<p>House Co logs concerns on PreSAF House Co meets with student & parents PSP actions agreed during meeting Date set for review (within 6 weeks) Targets shared with teachers and mentor using Pre SAF action form</p>	<p>PSP to include period of on report Clear targets (sample targets and strategies can be found in the SST documents) Referral to external agency if appropriate</p>
STAGE B	<p>House Co monitors SIMS PSP reviewed Targets not met OR up to 5 days internal or external exclusion OR Level 3 behaviour</p>	<p>Move to Stage B PSP set up Stage move on Intervention tracker</p>	<p>House Co updates Pre SAF HOH chairs Stage B meetings PSP action shared as above SSM invites attendees including LA representative (eg. BST) Copy of PSP sent to LA if moving to C Review date within 6 weeks</p>	<p>PSP to include measurable Targets Specific learning needs Learning style Pre SAF to SSG Advice or involvement from external agencies such as EWS, BST, CAMHS, EP, via SST</p>
STAGE C	<p>HOH monitors SIMS and liaises with House Co PSP reviewed and targets not met OR period of exclusion in excess of 5 days OR Level 4 behaviour</p>	<p>Move to Stage C PSP reviewed Stage move on Inclusion register</p>	<p>Asst Head chairs Stage C meetings Inclusion Programme set up at meeting possibly in conjunction with LA Actions shared as above Review date with 6 weeks GB Discipline Panel meeting if FPEX in excess of 15 days during one term HOH to prepare GB panel report</p>	<p>PSP to include Partnership Inclusion Programme followed and targets set Advice or involvement from external agencies such as EWS, BST, CAMHS, EP via SAF process considered by SST</p>
STAGE D	<p>PSP / PIP review PIP stage 2 - targets not met OR further period/s of exclusion in excess of 5 days</p>	<p>Move to Stage D Supported transfer Or PEX</p>	<p>PSP / PIP reviewed – Asst Head chair, HOH, to agree outcome with parents</p>	<p>Liaison with LA/ EOTAS re. PEX or managed move</p>